

SPEEDSTILE FP

DS *series*



PRODUCT DATA

SPEEDSTILE FP DS^{series}

Full Panel Speed Gate for Internal Installation

Motorised full glass sliding leaves 1.2 or 1.8m height

Architects and Interior Designers have always been at the forefront in introducing new materials. Gunnebo embraces this philosophy in the SpeedStile DS series with exciting new materials, selection of finishes and lighting effects. Finishes and ergonomic shapes that capture the designer's imagination. A new stylish and flexible design able to virtually blend infinite aesthetics within architectural interior needs, still including security features and performances from Gunnebo experience.

Applications are wherever high aesthetics is a must. Applications include Government, Finance, Banking, Retail, Telecommunications, Information Technology, Publishing, Leisure, Education....

MODE OF OPERATION

Passage in one or both directions electronically controlled. On receiving a signal from the access control system, or remote control, the wings open (Normally Closed NC).

If an unauthorised person tries to tailgate or attempts to enter from the opposite direction, the in-built alarm system is activated. If within the pre-set timeout no passage has occurred the lane will close and reset.



Normally Closed



Normal Use
(steady)

Alarm Conditions
(flashing)



Green arrow
Authorized use or designated free passage
Proceed through the unit

Emergency / Fire exit



Red cross
(Unit in use or no passage)
Passage not authorised

Alarm, fraudulent condition or technical alarm



Standard

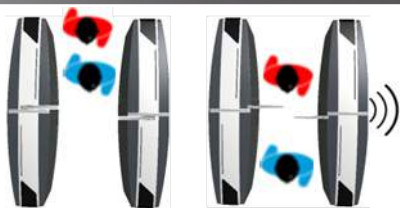
| | | | | | | | | |
|---|---|---|---|---|---|---|---|---|
| • | • | • | • | • | • | ○ | ○ | ○ |
|---|---|---|---|---|---|---|---|---|

Wide

| | | | | | | | | | | |
|---|---|---|---|---|---|---|---|---|---|---|
| • | • | • | • | • | • | ○ | ○ | • | • | • |
|---|---|---|---|---|---|---|---|---|---|---|

Plain dot indicates the functionality is implemented, empty dot indicates some limitations, no dot indicates not available.

SECURITY FEATURES



Tailgating/piggybacking attempt



Wrong way direction/intrusion attempt

Fraud Detection through sophisticated and proven algorithm

- Intrusion
- Tailgating
- Piggybacking
- Wrong way direction
- Leave aisle timeout
- Anti-crawling leaf flap barrier



SAFETY FEATURES

- Safety force sensing
- Safety rubber edges
- Accurate presence sensing
- Emitter/receiver infrared sensors technology
- Logic voltage 24 Vac

- Voltage free contact input for Fire Alarm fail state
- Fail-Safe mechanical opening (option)
- Fail-Safe via battery back-up opening (option)
- Wide walkway for wheel chair or easier access
- Accompanied wheelchair or Child passage management

For security and safety reasons children must be supervised by an adult at all times in the vicinity of an active lane. Any child being escorted through the lane must always precede the accompanying adult during passage.

DESIGN / CONSTRUCTION

DS series modern and stylish design, steel frame construction with robust technopolymer shells and inlay to allow a vast selection of finishes and customisation.

Short cabinet length (N/C)

1.2m panel height

1.8m panel height

Standard passage way 550mm and **Wide** passage (900mm) available. Available also as **Combi** - centre cabinet with narrow (550mm) passage in one side and wide (900mm) passage on the other side

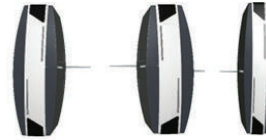


In order to create a lane it is necessary to have one right and one left cabinet. To create more than one lane, use one or more centre or combi cabinets. Select cabinets according to the number of lanes and passage width desired.

Two lane configuration comprising of 1N°L, 1N°C and 1N°R cabinets



Two lane configuration comprising of N°1 LW, 1N°CLW and 1N°R cabinet.



LED way-mode indicators flush mounted within the end leg, with illuminated symbols.



Green Arrow



Red Cross

LED red-green indicators horizontal and vertical into the walkway.

LED strips illuminating the plinth (option)

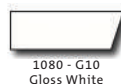
FINISHES / CUSTOMISATION

DS series includes applied film chrome mirror finishing for the cabinet plinth and applied film Matte Grey Aluminum for the inlay, technopolymer sides pearl white gloss finish, wings 12mm toughened glass with rubber safety edge.

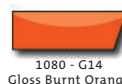
Standard finishes further comprise:

Side Panels optional finishes selection

Lid, End Legs inlay Applied film finishes Carbon Fiber Black, Anthracite, White and more available



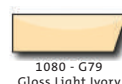
1080 - G10
Gloss White



1080 - G14
Gloss Burnt Orange



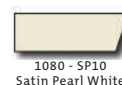
1080 - G47
Gloss Intense Blue



1080 - G79
Gloss Light Ivory



1080 - M12
Matte Black



1080 - SP10
Satin Pearl White



1080 - G201
Gloss Anthracite



1080 - G203
Gloss Red Metallic



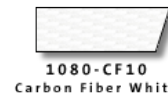
1080 - M203
Matte Grey Aluminium



1080 - M209
Matte Brown Metallic



1080 - M211
Matte Charcoal Metallic



1080 - CF10
Carbon Fiber White



1080 - CF201
Carbon Fiber Anthracite



1080 - CF12
Carbon Fiber Black

OPTIONS & ACCESSORIES

- DS series finishes and materials
- LED lighting effects
- Card reader integration
- Battery back-up
- Digital LCD counter
- Remote control systems

ACCESS SPECIFICATIONS

| Flow rates by type of Reader (1) | | | Disable Access | Emergency Egress |
|----------------------------------|------------------|------------------|----------------|------------------|
| Insertion Type | Swipe | Proximity | | |
| 20 PASSAGES / MN | 30 PASSAGES / MN | 40 PASSAGES / MN | ● (2) | ● |

- (1) Approximate figures
- (2) 900mm net passage way and algorithm able to manage wheelchair access

ELECTRICAL DATA & CONDITIONS OF USE

| Power Supply | Power Rating | | Battery Back-up | Fire Signal | Operating Temperature | IP Rating | Noise Level |
|-------------------|-----------------|-----------------------|----------------------------------|-----------------------------------|---------------------------------------|-----------|----------------------|
| 230VAC 50HZ(1) | 2VA STAND BY | 345VA IN OPERATION | FOR 1 LAST OPERATING CYCLE(2) | INPUT FOR VOLTAGE FREE CONTACT | +5°C TO +40°C RH 95% NO CONDENSING | IP20 | LESS THAN 55dB(2) |

- (1) 115Vac 60Hz also available
- (2) Option
- (3) Note: Average background noise in office environment is 50-55dB

DIMENSIONS & WEIGHTS

| | Overall Height | Passage Width | A Cabinet Height | B Cabinet Length | C Cabinet Width | Weight (kg) | |
|---------------------|----------------|---------------|---------------------|---------------------|--------------------|--------------|----------------|
| | | | | | | Side Cabinet | Centre Cabinet |
| STANDARD SHORT LANE | 1200/1800 | 550 | 950 | 1448 | 300 | 170 | 220 |
| WIDE SHORT LANE | 1200/1800 | 900 | 950 | 1448 | 480 | 185 | 240 |



dimensions in (mm), weight net (kg), might require lifting equipment. For details refer to installation detail drawings

INSTALLATION & MAINTENANCE

| Product Delivery | Application | Site Preparation (1) | Cabling & Conduits (2) | Control Board Location | Systems Integration(5) | Maintenance Access | MTTR(3) | MCBF(4) |
|------------------|-------------|-------------------------------------|------------------------|------------------------------|--|------------------------|----------------------|-----------|
| FULLY ASSEMBLED | INDOOR | FLAT & LEVEL FINISHED FLOOR +/- 5mm | THROUGH THE GROUND | IN MASTER SPEEDSTILE CABINET | 27 DIGITAL INTERFACE I/O RS232 RS485 SETTINGS PROGRAMMABLE VIA PARAMETERS | THROUGH LATERAL PANELS | LESS THAN 30 MINUTES | 4 MILLION |

- (1) Bolting depth MIN 70mm, concrete MIN fckcube30N/mm² resistance, MIN 1500 mm x 500 (750 for wide and combi) x 150 mm deep
- (2) Running MIN 140mm below finished floor level, should rise MIN 50mm from foundation
- (3) Mean time To Repair
- (4) Mean Cycle Between Failure
- (5) Potential free contact for card reader input. New Electronic Platform with in-built RS485 and COMR1 switching interface.

It is the customer's responsibility to ensure the structural integrity and strength of the installation location. Data provided is for information only, please refer to your usual Gunnebo Customer Service contact in order to prepare the installation site.

THE JOURNEY TOWARDS A SAFER FUTURE STARTS AT THE ENTRANCE

CONTACT US FOR MORE INFO

Gunnebo Entrance Control Ltd
 Bellbrook Business Park, Uckfield, TN22 1QQ
 United Kingdom
 Tel. +44 1825 761 022
 Email. info.entrancecontrol@gunnebo.com
 Web. www.speedstile.com

