



## TunTek S

### Steel Tunnel Door Resistant to Fire and Overpressure

The Gunnebo TunTek S doors have been specially designed to protect the access to services and evacuation routes from the stringent fire and overpressure conditions met in subway, rail and road tunnels.

TunTek S doors are certified two-hour fire resistant according to the European standard EN 1634-1 and accredited 1 million cycles for their resistance to either 2 kPa or 8 kPa overpressure waves caused by the traffic in the tunnel.

Fitted with panic push bars, the TunTek S double leaf doors allow for safe evacuation procedures demanded in tunnels, either in one direction (TunTek S2-S) or both directions (TunTek S8-S).

Depending on the model, the TunTek S also provides the facility to be fitted to any type of tunnel shape and diameter by the use of a unique surrounding structure kit.



## Material

- Framework: Self supporting electro galvanised steel
- Infill: Electro galvanised steel plates folded at the edges
- Finish: Uncoated

## Standard Equipment

- Locking: 3-point mechanical lock
- Handle: Panic bar on the fire side (track) and lever handle on the secure side (maintenance access / evacuation)

## Construction

- Double leaf door
- Opening: TunTek S2-S: 180° outward  
TunTek S8-S: 90° 1 leaf inward and 1 leaf outward
- DIN: TunTek S2-S: Left and right  
TunTek S8-S: Left or right
- Clear opening: TunTek S2-S: 1900mm at 90° (when both leaves open)  
TunTek S8-S: 900mm at 90° (inward leaf)  
925mm at 90° (outward leaf)

## Reference Standard

The Gunnebo TunTek S complete doorsets are certified EI<sub>2</sub> 120 minutes for fire resistance according the European standard EN 1634-1.

“EI” certification to standard EN 1634-1 defines the ability of a product to retain specific characteristics for a given time, against fire:

- “E” defines the product integrity i.e. the door’s capacity to prevent from the passage of smoke, combustion gases or flames
- “I” indicates the thermal insulation i.e. the door’s capacity to reduce the transmission of heat.

In addition to fire resistance, the Gunnebo TunTek S doors are accredited 1 million cycles for their overall resistance to 2 kPa overpressure waves (conditions met in subway, rail and road tunnels) or to 8 kPa overpressure waves (conditions met in high speed train tunnels).

### KEY FEATURES

- Combined fire and overpressure resistance
- Certified offering: EI<sub>2</sub> to EN 1634-1 and 2 kPa or 8 kPa / 1 million cycles
- Ease of installation

### MODEL

- TunTek S2-S double leaf - For subway, light train and road tunnels
- TunTek S8-S double leaf - For high speed train tunnels

### OPTIONS

- Painted RAL
- Door position contact switch

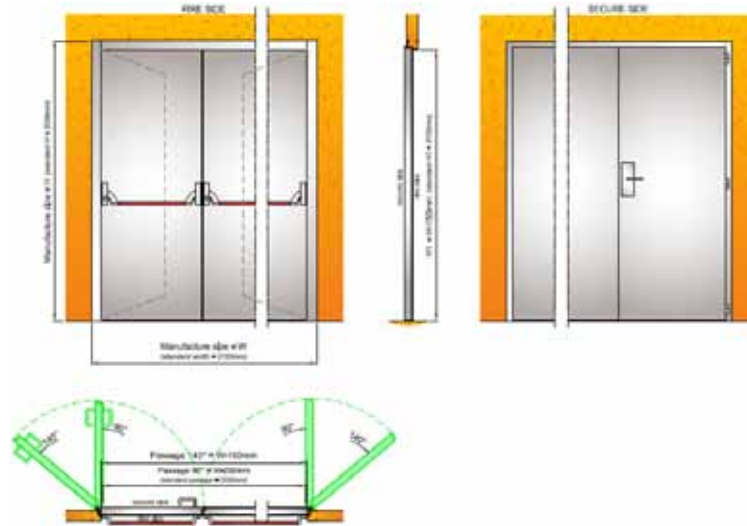
## TECHNICAL SPECIFICATIONS

Model	TunTek S2-S	TunTek S8-S
Type	Fire & Overpressure Resistant Doors	
Fire Rating	EI <sub>2</sub> 120 minutes to EN 1634-1	EI <sub>2</sub> 120 minutes to EN 1634-1
Pressure Resistance	1 million cycles at 2 kPa pressure waves	1 million cycles at 8 kPa pressure waves
Leaf option	Double	2 x Single
Total standard width	2150	1075 (inward leaf)   1110 (outward leaf)
Total standard height	2250	2130

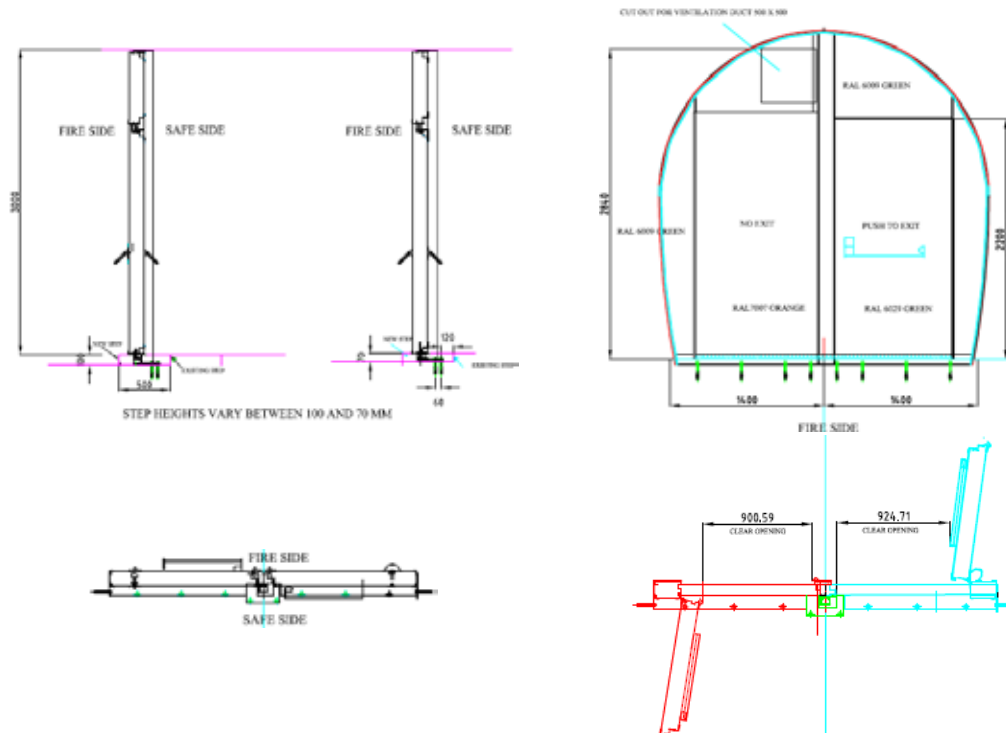
In pursuit of its policy of continuous refinement and improvement, Gunnebo reserves the right to modify design and details given in this material at any time and without notice. Images enclosed in this material are examples of installations and may not be indicative of a standard product.

## SITE PREPARATION

TunTek S2-S



TunTek S8-S



In pursuit of its policy of continuous refinement and improvement, Gunnebo reserves the right to modify design and details given in this material at any time and without notice. Images enclosed in this material are examples of installations and may not be indicative of a standard product.

## NOTICE

- The product performance depends on the quality of its installation. All installation details are provided in the TunTek S installation manual.
- Any modification of a certified doorset by adding non factory fitted device may result in the loss of certification. Contact Gunnebo for more information.
- Test certificates for fire resistance and accreditations for overpressure resistance are available on demand. Contact Gunnebo for any certification/accreditation documents request.