

# SeRitz Locks

## SeRitz 3000 Security Lock for Internal Use

### Technical Specifications

<b>Drive:</b>	Motorised
<b>Orientation:</b>	Uni directional, right or left hand mounting
<b>Design:</b>	<ul style="list-style-type: none"><li>• Unlocking is operated after request using dry contacts (push button, badge readers, keypads, etc.)</li><li>• The SeRitz 3000 is factory fitted option</li><li>• Optional supply to most Gunnebo SAS units and doors</li><li>• Suitable for integration into ballistic and physical attack products</li><li>• Each locking point capable to withstand 3 tonnes mechanical resistance</li><li>• 100Kg pressure can be applied, i.e panic situation, which will not prevent the door from opening</li><li>• Motorized element is installed within the door jamb and locking cups into the opening profile</li><li>• All cabling is consealed within the door jamb structure</li><li>• A compensation up to 8mm is required in order to prevent any door distortion</li></ul>
<b>Power Failure:</b>	As specified at time of order
<b>Logic Voltage:</b>	24Vdc
<b>Operating Temperature:</b>	0°C to +70°C
<b>Approximate Weight:</b>	2.8Kg (standard version with single point locking system)

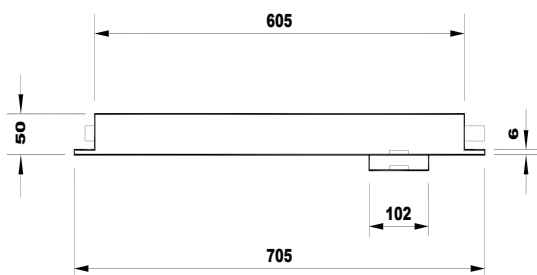
### Available Models

- The SeRitz 3000 - Fail-safe: Single point locking
- The SeRitz 3000 - Fail-lock: Available with one, two or three point locking

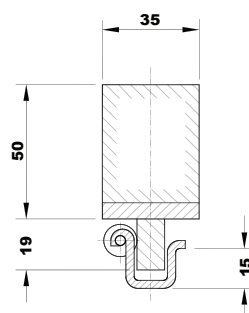
### Accessories and Optional Extras

- Power supply
- Mechanical key override lock cylinder

### Lock Details



Lock Body Side Elevation



Latch Plate Sectional Elevation



### Product Description

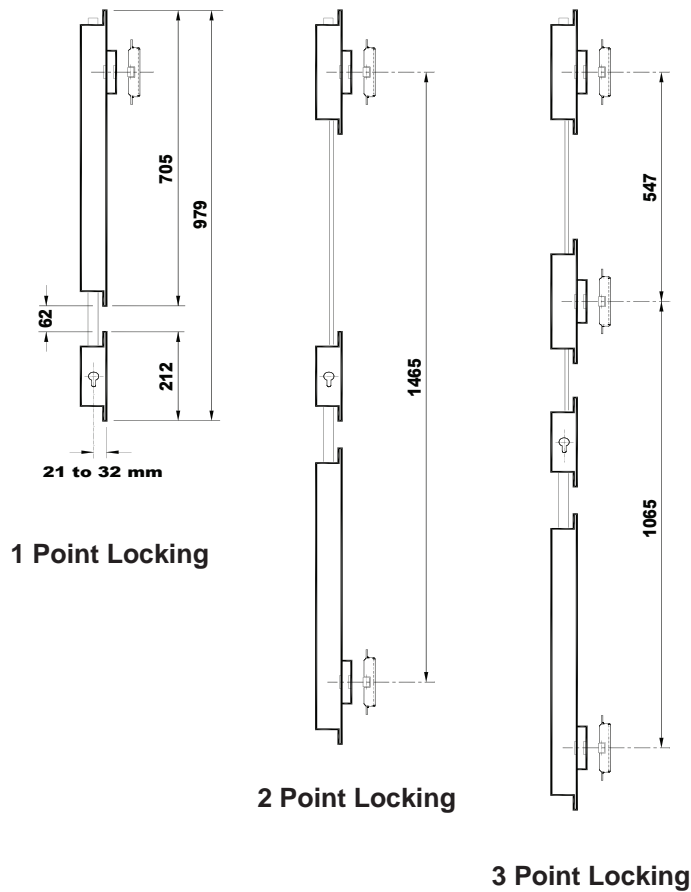
The range of SeRitz electric locks guarantees the locking security for access control and evacuation procedures.

The SeRitz 3000 is a factory fitted lock offering an efficient single or multiple locking facility for many types of doors, including the heaviest, while providing fail-lock or fail-safe options.

### Users Include

- Head Office
- Banking
- R & D
- Computer Suites
- Information Technology
- Telecommunications
- Government
- Law Enforcement
- Retail
- Airport

**Protect**



For sales enquiries please contact:



**Competence Centre Entrance Control**

Gunnebo Entrance Control Ltd, c/o Ritzenthaler SA, BP40285 Baldenheim, 67606 Sélestat, France  
 Tel +33 3 88 85 06 25 Fax +33 3 88 85 06 95  
 E-mail info.entrancecontrol@gunnebo.com  
 Web www.gunnebo.com



**A COMPANY WITHIN THE GUNNEBO GROUP**

HEAD OFFICE SWEDEN  
 Gunnebo AB, Box 5181, SE-402 26 Goteborg, SWEDEN. Tel +46-31 83 68 00, Fax +46-31 83 68 10

**www.gunnebo.com**

Note: In pursuit of its policy of continuous refinement and improvement, Gunnebo Entrance Control Ltd reserves the right to modify design and details.